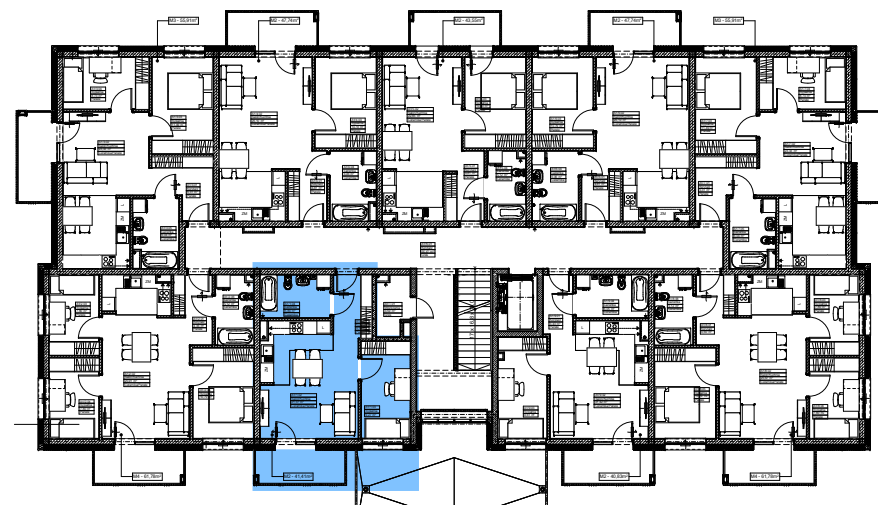
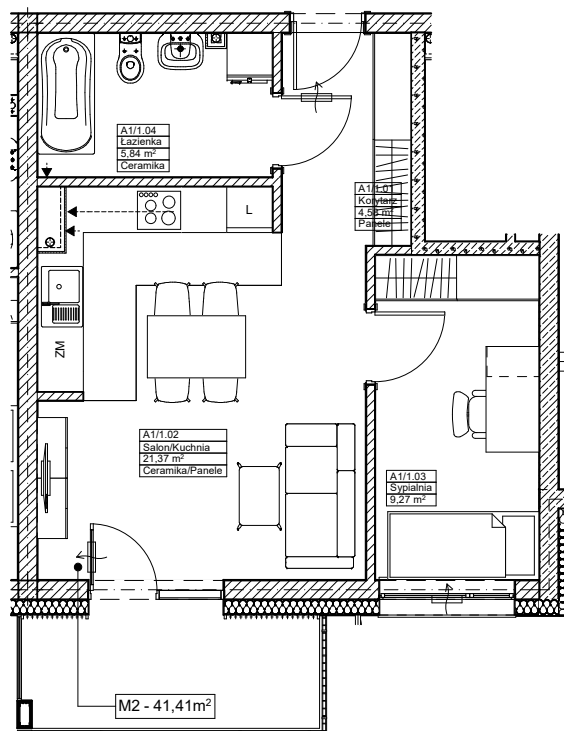


# PAWONKÓW



## PIĘTRO 1 2 POKOJE BALKON

A1/1.01	Korytarz	Ceramika	4,58
A1/1.02	Salon/Kuchnia	Panele/Ceramika	21,37
A1/1.02	Sypialnia	Panele	9,27
A1/1.03	Łazienka	Ceramika	5,84
<b>RAZEM</b>			<b>41,06</b>
	Balkon		5,91